

6000 Precision Headspace Analysers



Advanced Products for Measurement of O₂ and CO₂ in MAP/CAP Headspace Atmospheres



Applications

Fresh Meat	Cooked Meat	Vegetables	Salads
Bakery	Snack Foods	Ready Meals	Fish
Pharmaceutical Vials		Pharmaceutical Packaging	

Features & Benefits

- Easy to set up and use
- Intuitive menu
- Auto calibrate
- Auto diagnosis
- Set tests for pass or fail
- Printer option
- Computer software option
- Waterproof option

Precision flowmeter

Precision flowmeter provides visual confirmation of sample flow. Unlike warning lights, users can monitor system performance and resolve potential problems before they occur.

Display hold

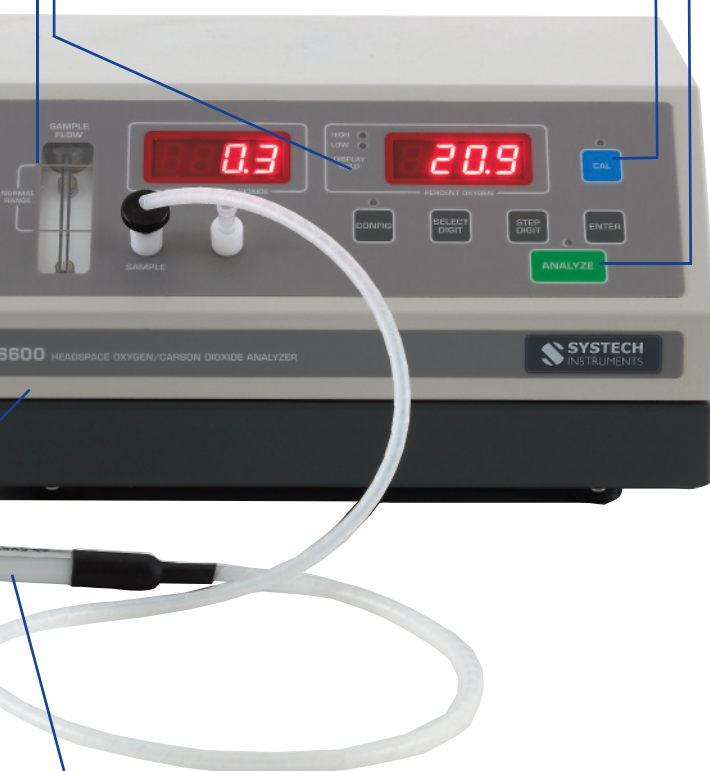
Locks most recent high or low concentration value. Bright, large character display is easy to read in any lighting condition. Status lights indicate mode of operation.

Timed Analysis

Timed, automatic analysis is provided at the touch of a button. Programmable sampling duration and data integration make these among the most advanced headspace analysers available.

Autocalibration

With a single button the instrument self calibrates in just 30 seconds using ambient air.

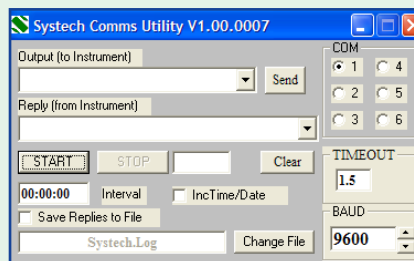


Sample probe

The robust sample probe is designed to accept standard luer accessories and includes easily replaced needles and particulate filters. With a convenient sample probe holder to prevent needle contamination and sample line damage.

Software

User friendly software parameters are easy to enter and can be secured against accidental change.



Automated sampling

Automated package sampling is easy. Insert the sampling needle into the package and press analyse. The instrument does the rest; extracting the sample, analysing sensor output and holding the results for viewing on the bright autoranging display.

Samples injected directly

Headspace samples can be injected directly into the instrument when automated sampling is not practical.

Accessories

The can piercing station is perfect for rigid packaging and has proven to be stable and reliable in hundreds of demanding applications.



Can Piercing Station

Principle of operation

Oxygen

The oxygen detector utilises a high purity, stabilised zirconia ceramic and platinum sensor maintained within a high temperature environment. The sensor produces a log output which is converted and linearised to yield a digital readout directly proportional to a sample's oxygen content.

Carbon Dioxide

This sensor integrates a solid state infrared source and detector into a single high performance assembly. Narrow wavelength filtering and strict temperature compensation ensure that only carbon dioxide is measured, even within complex gas mixtures. Precise signal conditioning and microprocessor control provide direct digital indication of CO₂ concentrations.

Technical Specifications

Oxygen Range	Autoranging from 0.001 to 100% (models 6500 & 6600)
Carbon Dioxide Range	Autoranging from 0.1 to 100% (models 6600 & 6700)
Displays	Bright 4 Digit LED, Display Hold, Analyse, and Calibration Status Indicators
Response Time	<5 seconds (O ₂), <10 seconds (CO ₂)
Accuracy O ₂	Below 10% = 0.02% absolute (max 2% of reading) and ±1 on the last digit shown Above 10% = 0.2% absolute (max 2% of reading) and ±1 on the last digit shown
Accuracy CO ₂	±2% FSD
Ambient Temperature	+5 to +40°C
Internal Sample Pump	Processor Controlled Diaphragm Type
Syringe Injection	Via Male Luer Syringe Adaptor (supplied)
Enclosure	Epoxy Coated Steel, Polycarbonate Operators Panel
Dimensions	305mm W x 254mm D x 152mm H
Weight	5.3 kg

Options

Alarms	User Configurable, Dual Set Points
Voltage Output	0-100mVDC, 0-10VDC
Current Output	0-20mA, 4-20mA
Computer Interface	RS232 Port for Computer/Data Printer
Rigid Pack Sampler	Extracts samples from cans, jars, bottles, etc. Includes all necessary fittings and supplies.
Compact Printer	40 Column Thermal Desktop Printer

Power Requirements

Mains power	110 / 220 VAC, 50 / 60 Hz. 100 Watt Maximum
-------------	---

Systech Instruments have over 25 years experience of providing analysis solutions for a wide range of industries. From our manufacturing plant in the UK we produce gas analysers for industrial process industries, headspace analysers for monitoring gas flushing of food products, and our range of permeation analysers.



17 Thame Park Business Centre, Wenman Road,
Thame, Oxfordshire OX9 3XA
Tel: +44 (0)1844 216838 Fax: +44 (0)1844 217220
E-mail: advice@systech.co.uk www.systechinstruments.com



Illinois Instruments, inc
2401 Hiller Ridge Road
Johnsburg, Illinois 60050
U.S.A.
Tel: +1 815 344 6212
Fax: +1 815 344 6332
E-mail: sales@illinoisinstruments.com
www.illinoisinstruments.com